

FLEET MANAGER

Comprehensive fuel consumption data analysis software

Description

The FUSION™ system is an advanced purpose-built Marine Vessel Fuel Accountability and Management System that provides a means to accurately measure, record, report, and display the fuel consumption and fuel efficiency of marine vessel diesel engines. The Fleet Manager software allows a user to analyze the fuel system data from a vessel or fleet after it is retrieved from the appropriate FUSION™ system DAU(s).

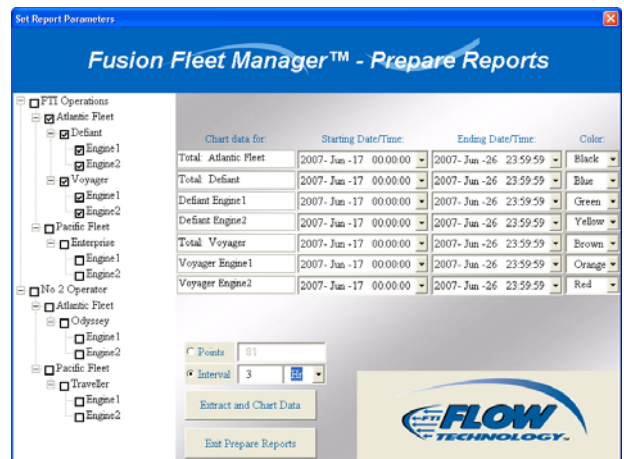
Fleet Manager is a 2 part, user-configurable tool that allows the user to manage the fleet's central fuel consumption database in the most efficient way for their operations. Fleet Manager automates the addition of new consumption data to the existing central operator database over time by recognizing new data from existing engines, generators, individual vessels, fleets, and/or entire operators that the user configured during the initial Fleet Manager software setup.

When the user needs to analyze a specific subset of fuel system data, Fleet Manager also provides an extraction tool to give the user the specific data in the level of detail they desire. The specific data subset is selected via checkboxes to define the desired operator, fleet, individual vessel, engine, or generator that contains the desired data. The data set can be narrowed further by defining a specific date and time range, and the level of detail is selected by defining the number of data points desired over the date and time range.

The extracted data is then provided to the user in a Microsoft Excel spreadsheet containing several pre-defined graphs and the consumption data itself for the user to perform more detailed analysis. The data can be used for scheduling maintenance, recording emissions statistics, creating ISO 14000 records, including fuel consumption records in future mission planning, customer fuel consumption records for billing support, and/or audit support.



Data Addition View



Data Extraction View



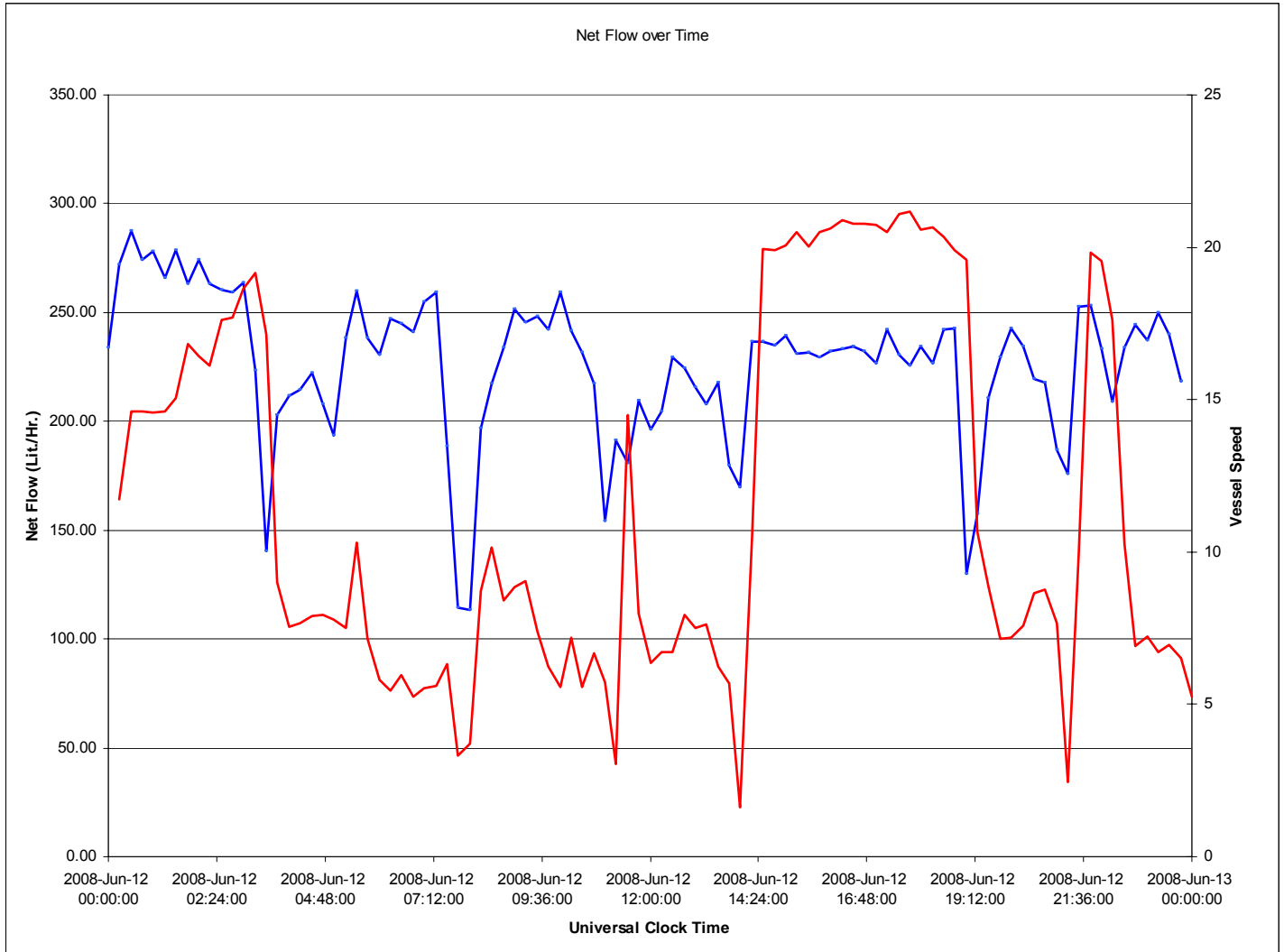
Configure Vessel View



Features

- Installable on a Microsoft Windows based PC or server - [Processor 2 Ghz minimum; RAM 1 GB minimum]
- Converts consumption data from XML format into filtered Microsoft Excel spreadsheets - [Microsoft Office Excel XP]
- Data can be extracted by a user defined time range from years down to seconds
- Detailed analysis is achieved by selecting the number of data points desired over the time range
- Data can be transferred from the vessel using a USB thumb drive, GPRS, or via satellite
- Pre-configured export template in Microsoft Excel provides detailed data graphs and tables

Example data graph – 24 hour period; vessel fuel consumption and speed



Specifications are for reference only and are subject to change without notice.

Local Representative:



8930 S. Beck Avenue, Suite 107, Tempe, AZ 85284 USA
Tel: (480) 240-3400 Fax: (480) 240-3401
Toll Free: (800) 528-4225
Email: ftimarket@ftimeters.com • Web: www.ftimeters.com